

PLAN OF PROPOSED SUBDIVISION

OF PART OF

PARCEL 10 - PLAN 63B09538

N.E. 1/4 SEC. 11 - TWP. 50 - RGE. 8 - W. 3 Mer.

VILLAGE OF SHELL LAKE

NOVEMBER 2021

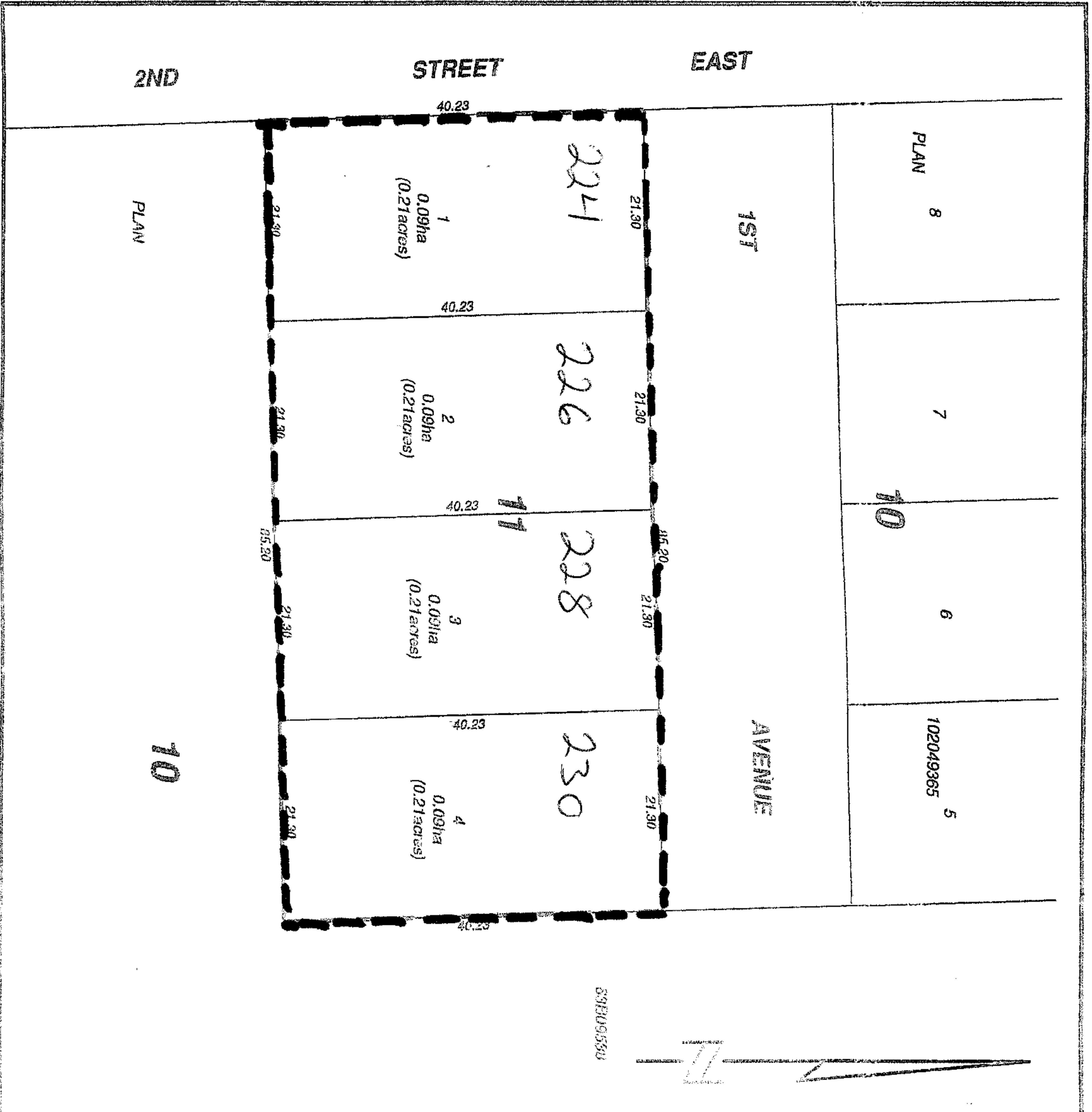
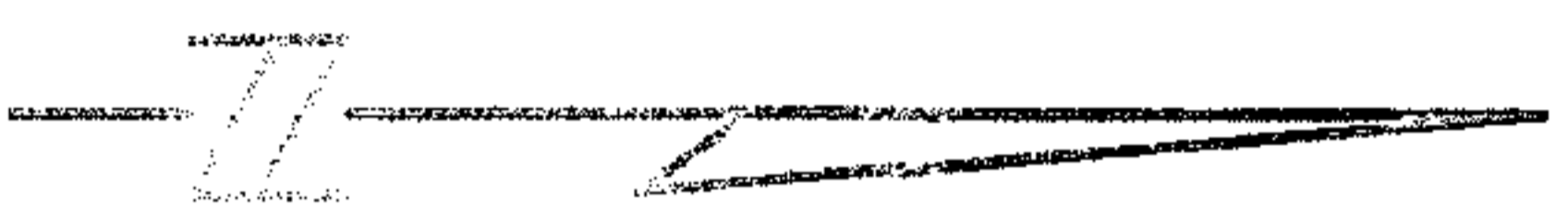
SCALE 1:500

NOTES

PORTION TO BE SURVEYED IS OUTLINED IN A HEAVY DASHED LINE, AND CONTAINS
 0.091ha (0.21 acres)
 DIMENSIONS ARE APPROXIMATE AND MAY VARY BY ± 10 METRES.
 DISTANCES ARE APPROXIMATE AND MAY VARY BY ± 10 METRES.

*THINGS OF COMMONWEALTH RELATIONS
 (including Planning Branch
 Approval)*

839E095389



VILLAGE OF SHELL LAKE
 APPROVED: COUNTY PLANNING BRANCH OF SHELL LAKE

Matthew J. Rusted
 Saskatchewan Land Surveyor

No.	REVISIONS	DATE	DR.	CH.
0	Preliminary Survey FILE: PA21972	12/22/2021	jp	mtf



jp/mtf