

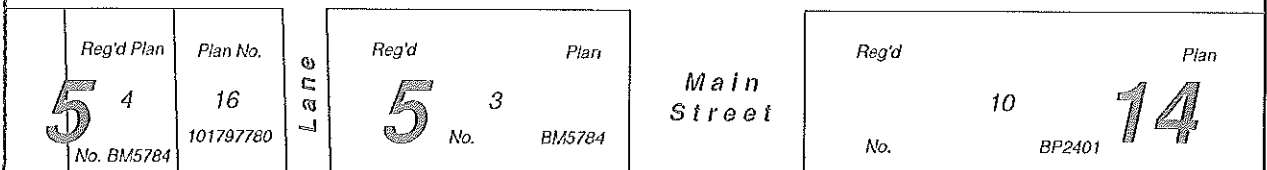
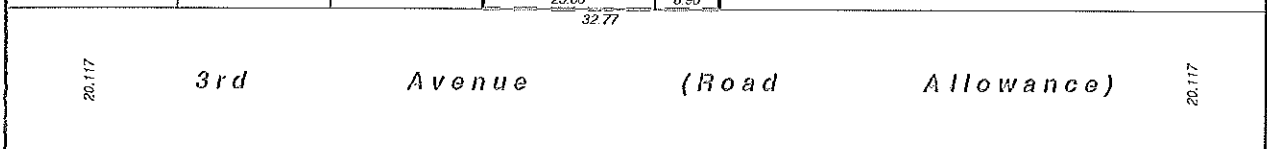
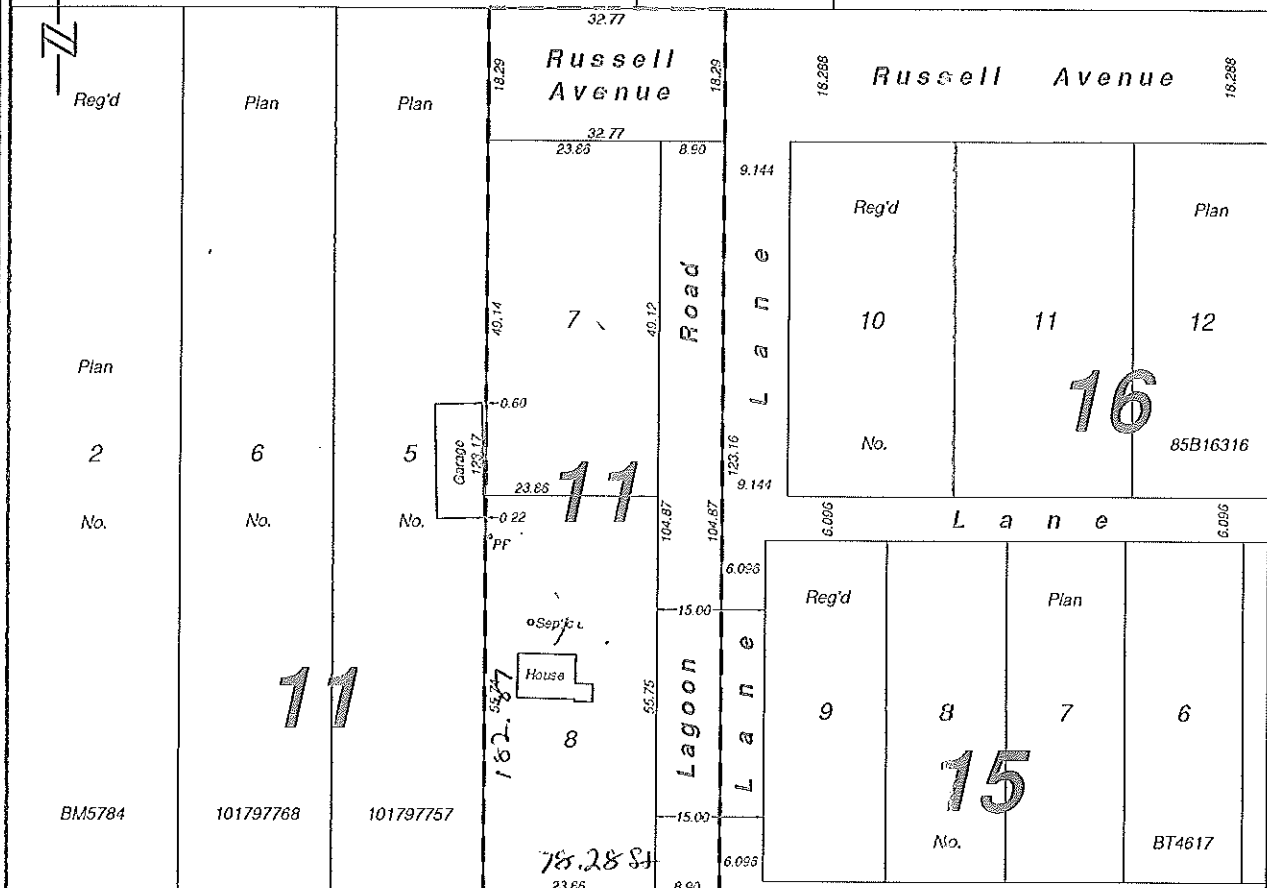
S.W. ¼ Sec. 14 - 50 - 8 - W3Mer.  
( Plan No. 101928461 )

Plan No.

**B**

101928461

S.E. ½ Sec. 14 - 50 - 8 - W3Mer.



Examined and Approved:  
  
Village of Shell Lake (Mayor)  
  
Village of Shell Lake (Administrator)

**NOTES**

- Measurements are in metres and decimals thereof, with an accuracy of ±1 metre.
- Standard road allowances shown in this plan are 20.117m in width.
- Portion to be surveyed is outlined by a heavy broken line and contains 0.40 hectares more or less.

MINISTRY OF GOVERNMENT RELATIONS

**Plan of Proposed Subdivision**  
Showing Subdivision of All of  
Lot 1, Block 11, Reg'd Plan No. BM5784  
S.W. ¼ Sec. 14-Twp. 50-Rge. 8-W3Mer.  
Village of Shell Lake  
**Saskatchewan**  
Scale 1:700

By:   
SASKATCHEWAN LAND SURVEYOR

No.	Date	Revision	Rev. By	Chd. By
1.	28/01/16	-Added building ties to garage on Lot 5.	S.S.	R.R.
2.	05/08/16	-Changed 'Lane' within approval line to 'Lagoon Road'.	S.S.	R.R.

Drawn By:	Checked By:	Date:	File No.	Drawing Name:	Rev.	<b>Meridian Surveys Ltd.</b>
S.S.	R.R.	November 10, 2015	W15309	W15309-PPS	2	